

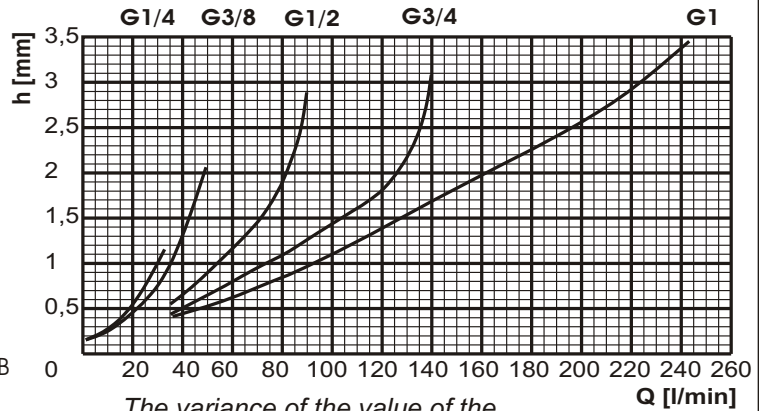
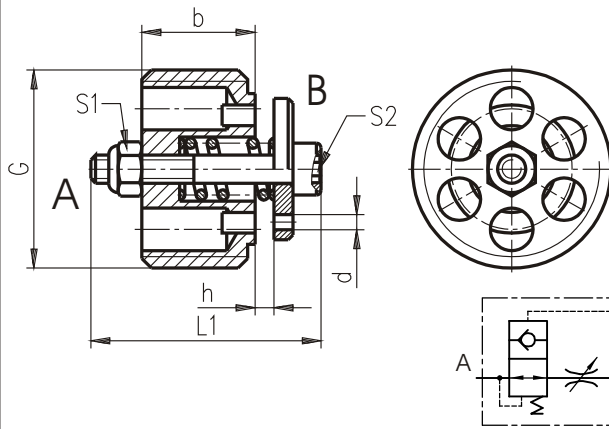


**Hidro  
Pnevmo  
Tehnika**

3, Vojeli St., Kazanlak, Bulgaria  
Tel.: +359 431/ 62 228  
Fax : +359/ 62 019  
e-mail : info@hpt-bg.com  
www.hpt-bg.com

## LINE RUPTURE PROTECTION VALVE

**KA ...**



The variance of the value of the reported flow from the chart is  $\approx 10\%$

The valve screws to end of the thread in the body. At mounting the side "B" - to internal part of cylinder. Required flow rate Q cl. Is adjusted - by clearance "h". All performances and calibration are carried out by using hydraulic oil with viscosity approx. 46 cSt at 50°C. Temperature range: -20 °C...+80 °C. Filtration absolute 63 µm.

Type	Q <sub>max</sub>	P <sub>max.</sub>	G	L1	b	h <sub>max.</sub>	S1	S2
	L/min	bar						
KA .. 14	35	350	G ¼"	19	8.7	1.2	5.5	2.5
KA .. 38	55		G 3/ 8"	25	12	2		
KA .. 12	110		G ½"	25	12	2.5	7	3
KA .. 34	160		G ¾"	34	16.5	2.8		
KA .. 1	260		G 1"	34	18.5	3.5		

### ORDERING CODE

**KA 10 14 0.6**

Diameter d [mm] : ...  
Without hole : **Omit**

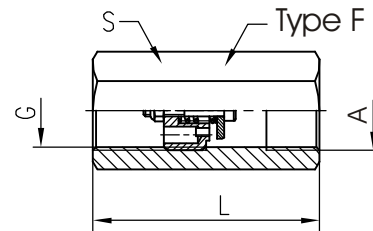
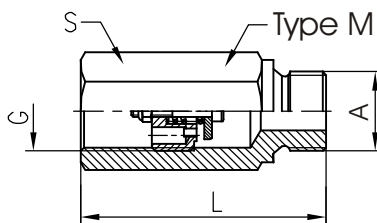
Type

Operating flow rate Q ( l/min)

Threads G : **14,38,12,34**

## BODY FOR LINE RUPTURE PROTECTION VALVE

**KA ... / ...**



Type	P <sub>max.</sub>	G	L	S	A
	bar		mm	mm	
KA .. 14M..	350	G ¼"	50	19	G ¼"
KA .. 38M..		G 3/ 8"	58	22	G 3/ 8"
KA .. 12M..		G ½"	65	27	G ½"
KA .. 34M..		G ¾"	78	36	G ¾" M22x1.5

Type	P <sub>max.</sub>	G	L	S	A
	bar		mm	mm	
KA ..14/ F..	350	G ¼"	48	19	G ¼"
KA ..38/ F..		G 3/ 8"	52	22	G 3/ 8"
KA ..12/ F..		G ½"	60	27	G ½"
KA ..34/ F..		G ¾"	72	36	G ¾" M22x1.5

### ORDERING CODE

Type

**KA 20 14 / F 14**

Threads A : **14,38,12,34**

Operating flow rate Q ( l/min)

Threads G : **14,38,12,34**

Type : **M, F**