

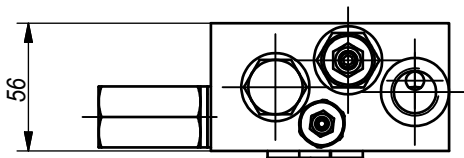
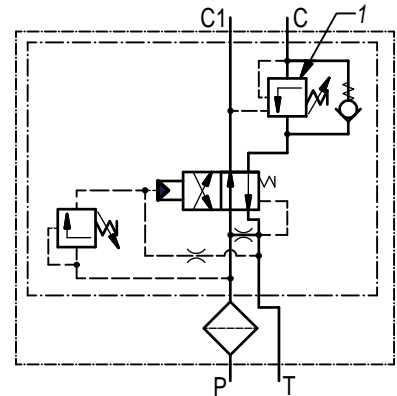
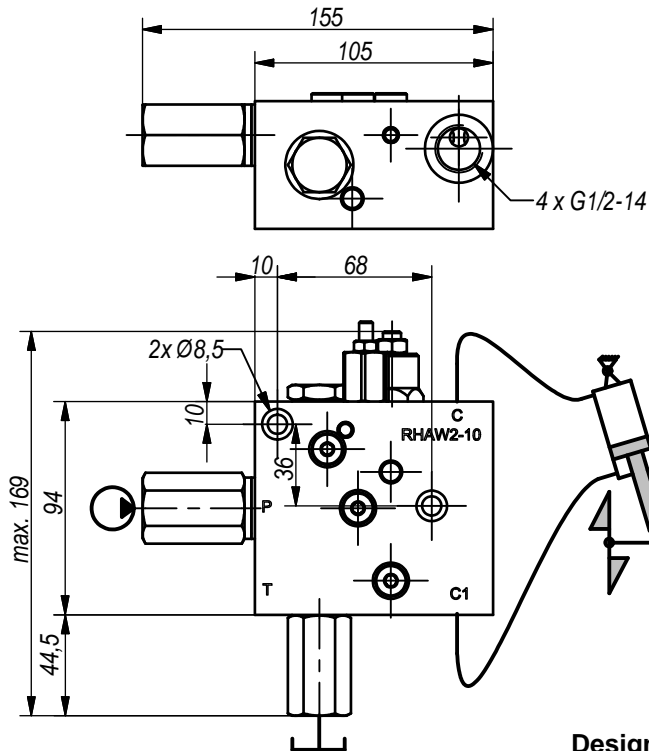
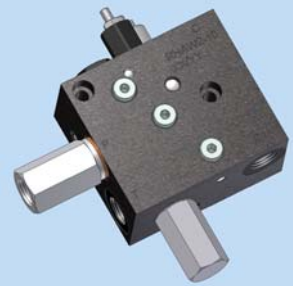


**Hidro
Pnevmo
Tehnika**

3. Vojeli St., Kazanlak, Bulgaria
Tel.: +359 431/62 228
Fax.: +359 431/62 019
e-mail : info@hpt-bg.com
www.hpt-bg.com

HYDRAULIC DIRECTIONAL CONTROL VALVE WITH AUTOMATIC SWITCHING

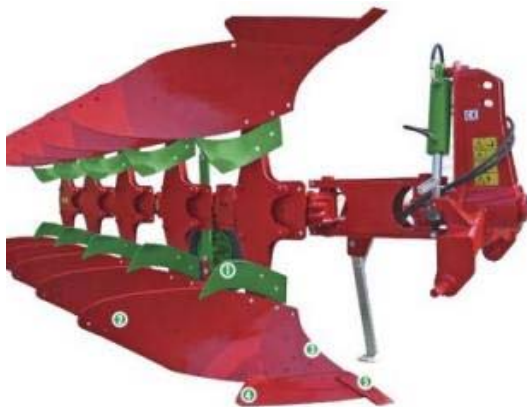
RHAW2-10



Note: All performances and calibration are carried out by using hydraulic oil with viscosity approx 46 cSt at 50 °C

Designation and function:

The directional control valve is designed to control the flow of the oil, actuating the hydraulic cylinder for turning a tractor-driven plough. When a flow is fed to the port P of the block, the cylinder makes one full cycle of retraction and extension and keeps hydraulically locked, despite the fact that there is pressure at the input port. It is necessary to wait for 3-4 seconds after the feed of the flow stops, till the next action, in order to restore the position of the switching spool in the directional control valve. On the next flow feed the cycle repeats itself.



TECHNICAL DATA

TECHNICAL DATA		
General		
Ambient temperature	°C	-20...+50
Hydraulic		
Maximum pressure	bar.	200
Supply flow range	L/min	10...50
Control range of the switching pressure	bar.	50...200
Adjustment range of the overcenter valve (OWC-pos.1)	bar.	100...250
Working fluid – mineral oil		
- viscosity	mm ² /s	10...100
- filtration level	µm	25 or better
- temperature	°C	-20...+80

ORDERING CODE

RHAW2-10

Type