

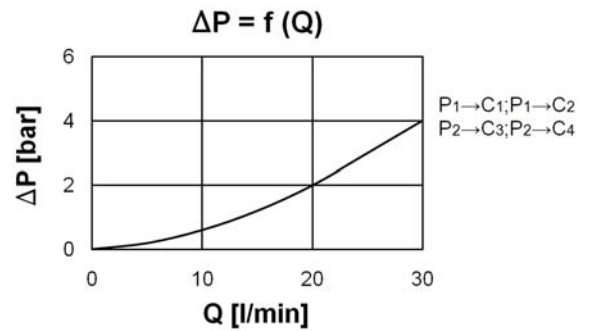
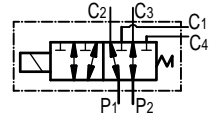
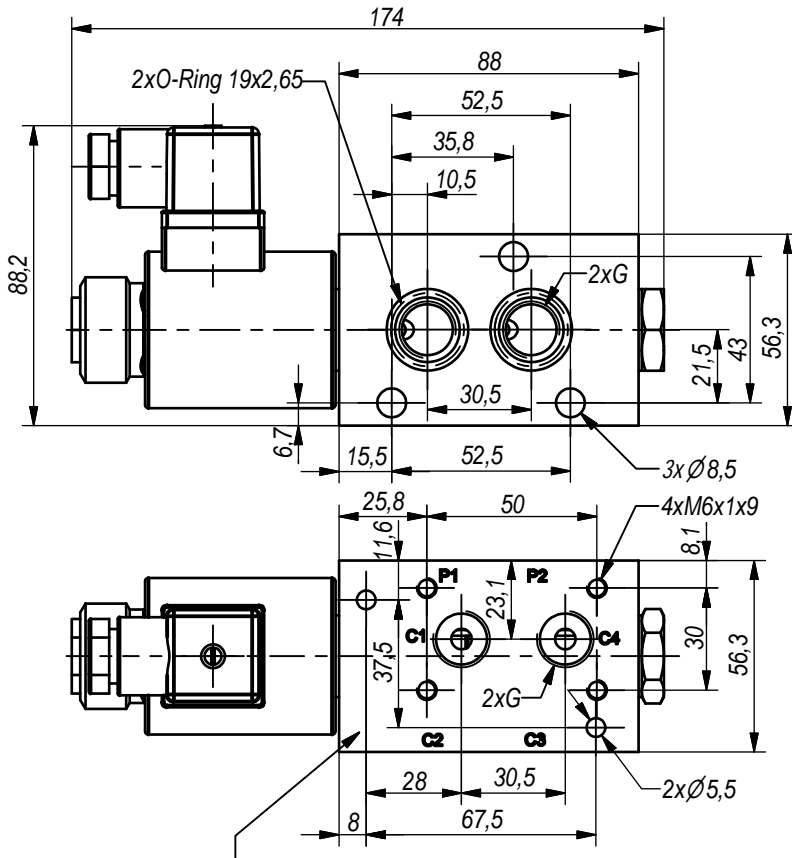


**Hidro  
Pnevmo  
Tehnika**

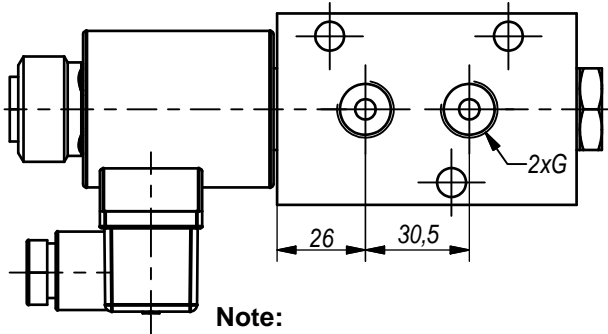
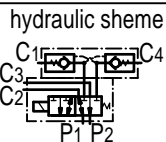
3. Vojeli St., Kazanlak, Bulgaria  
Tel.: +359 431/62 228  
Fax.: +359 431/62 019  
e-mail : info@hpt-bg.com  
www.hpt-bg.com

## 6/2 DIRECTIONAL SOLENOID-OPERATED VALVE

**. RS06 V .. / ..**



On this side it possible manufacturing of mounting openings for valve VBD R 38 (for more information see the hydraulic sheme and page ...).  
Performed on clients order only.



**Note:**

1. All performances and calibration are carried out by using hydraulic oil with viscosity approx 46 cSt at 50 °C.
2. Tightening torque for solenoid - 25 N.m.

TECHNICAL DATA		
General		
Ambient temperature	°C	-20...+50
Hydraulic		
Nominal pressure	bar	200
Nominal flow rate	L/min	30
Working fluid – mineral oil		
- viscosity	mm <sup>2</sup> /s	10...100
- filtration level	µm	25 or better
- temperature	°C	-20...+80
Elektrical		
Voltage of operating solenoid	V DC	12 24
	V AC	110/50Hz 220/50Hz

### ORDERING CODE

**. RS06 V 38 / 12**

Number of sections: **2...8**  
(design see page 1.3)  
One section: **Omit**

Type

Port threads "G" - code:  
**G3/8" - 38**  
**G1/2" - 12**

Operating voltage - code:  
**12V / 00Hz - 12**  
**24V / 00Hz - 24**  
**110V/50Hz - 110**  
**220V/50Hz - 220**