

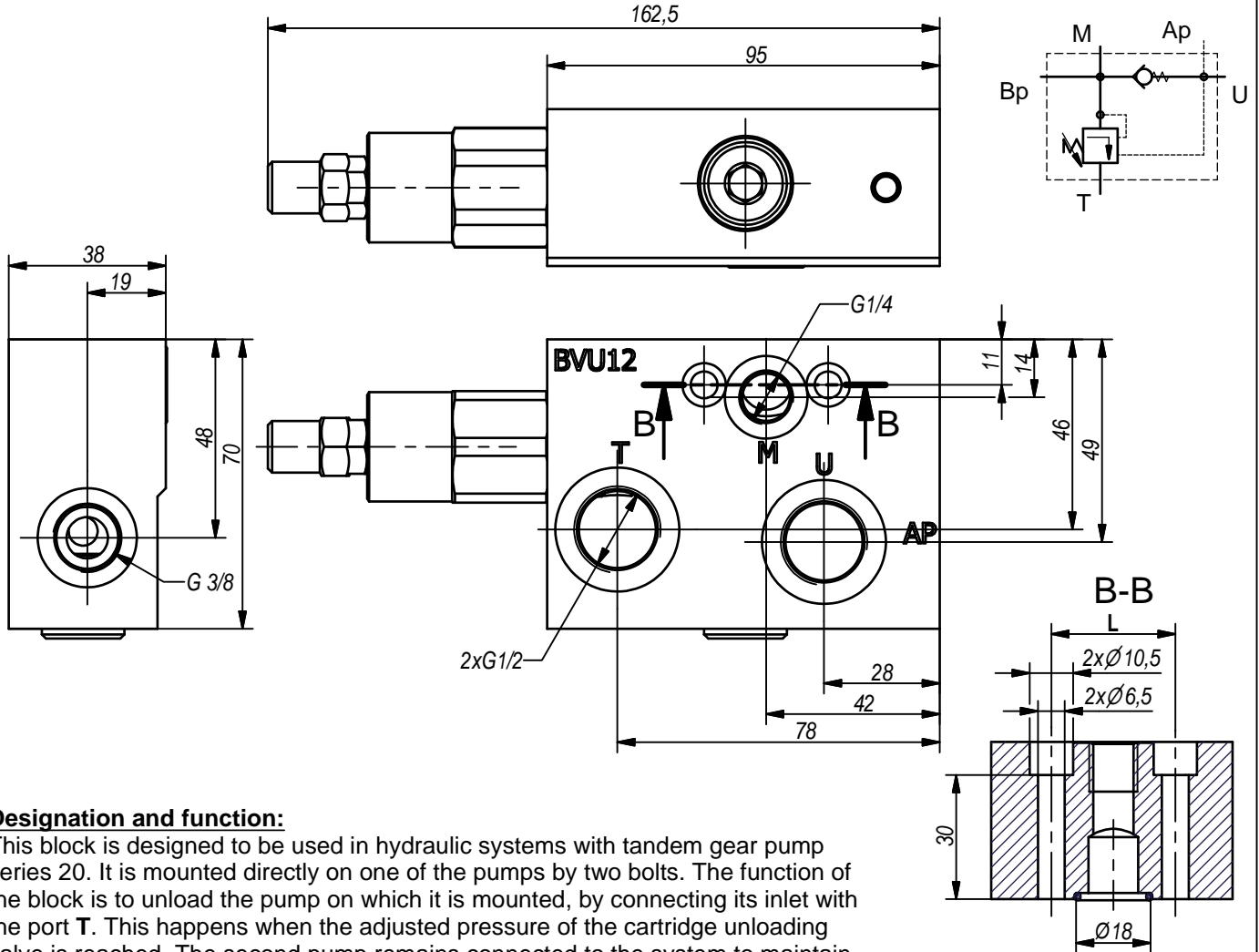


**Hidro  
Pnevmotehnika**

3, Vojeli St., Kazanlak, Bulgaria  
Tel.: +359 431/62 228  
Fax.: +359 431/62 019  
e-mail : info@hpt-bg.com  
www.hpt-bg.com

## TWO PUMP HI-LOW UNLOADING VALVE

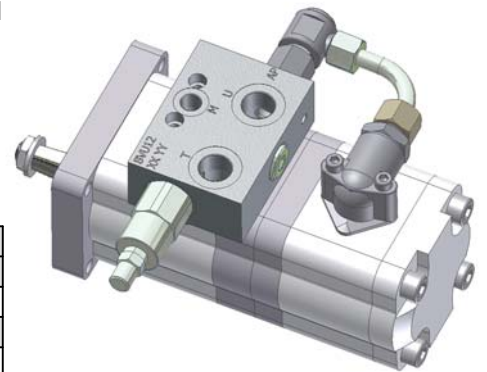
### BVU 12.



#### Designation and function:

This block is designed to be used in hydraulic systems with tandem gear pump series 20. It is mounted directly on one of the pumps by two bolts. The function of the block is to unload the pump on which it is mounted, by connecting its inlet with the port T. This happens when the adjusted pressure of the cartridge unloading valve is reached. The second pump remains connected to the system to maintain pressure. In case of pressure reduction below the adjusted rate, the unloaded pump reconnects to the system.

All performances and calibration are carried out by using hydraulic oil with viscosity approx 46 cSt at 50 °C  
Temperature range -20...+80 °C  
Filtration absolute 25 µm



MOUNTING CODE	
	L [mm]
BVU12 A	30
BVU12 B	40

TECHNICAL DATA			
		at port Ap	at port Bp
Max working pressure	bar	210	80
Maximum flow rate	L/min	15	45
Adj. pressure range	bar	20..80	

#### ORDERING CODE

**BVU12 A**

