

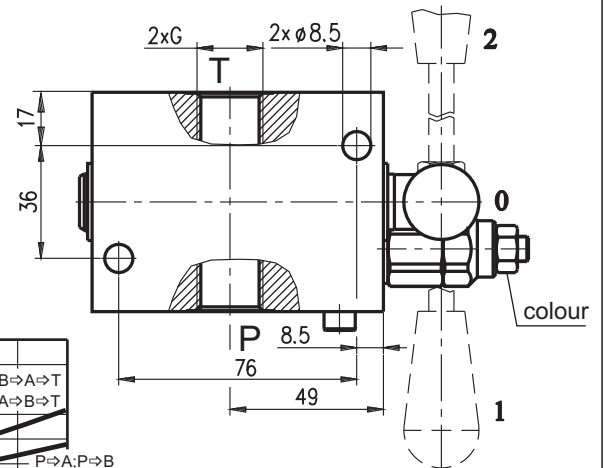
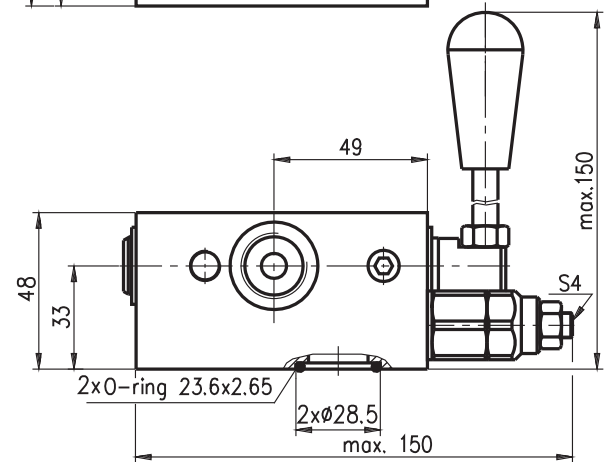
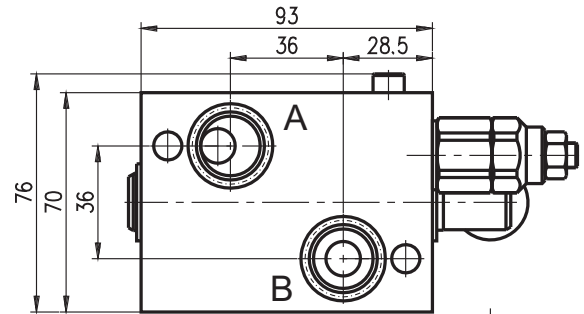
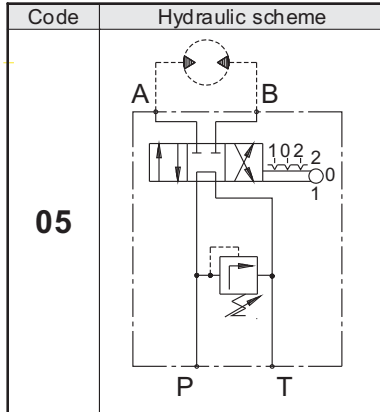
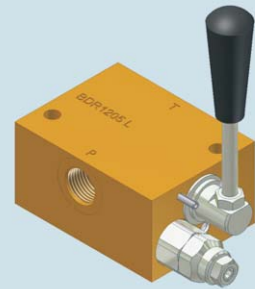


**Hidro  
Pnevmo  
Tehnika**

3, Vojvodi St., Kazanlak, Bulgaria  
Tel.: +359 431/62 228  
Fax.: +359 431/62 019  
e-mail: [info@hpt-bg.com](mailto:info@hpt-bg.com)  
[www.hpt-bg.com](http://www.hpt-bg.com)

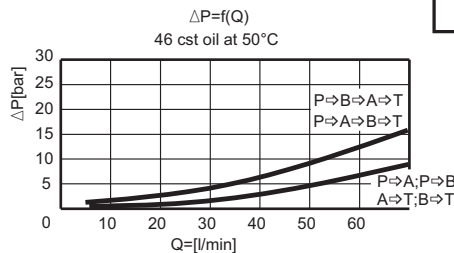
## HYDRAULIC MOTOR BLOCKS TYPE BD

**BDR 1205 . / . .**



Pressure range			
Code	Standard setting (Q=5l/min)	Abj. pressure range	Colour
	bar	bar	-
<b>10</b>	80	10...100	White
<b>25</b>	180	30...250	Yellow

Code	Adjustments
<b>A</b>	Leakproof hex. socket screw
<b>B</b>	Handknob and locknut
<b>C</b>	Sealing cap



Type	Nom. flow rate	P <sub>max.</sub>	Port threads G
	L/min	bar	-
<b>BDR 1205 . / . .</b>	70	250	G1/2 - DIN 3852

### ORDERING CODE

**BD R 12 05 L / 10 A**

Type

Hydraulic motor type - code:  
MP or MR - **R**

Code scheme:  
**05**

Code adjustments:  
**A; B; C**  
(see table above)

Port threads G - code:  
G1/2 - **12**

Body material - code:  
Aluminium - **Omit**  
Brass - **L**

Pressure range code:  
**10; 25**