

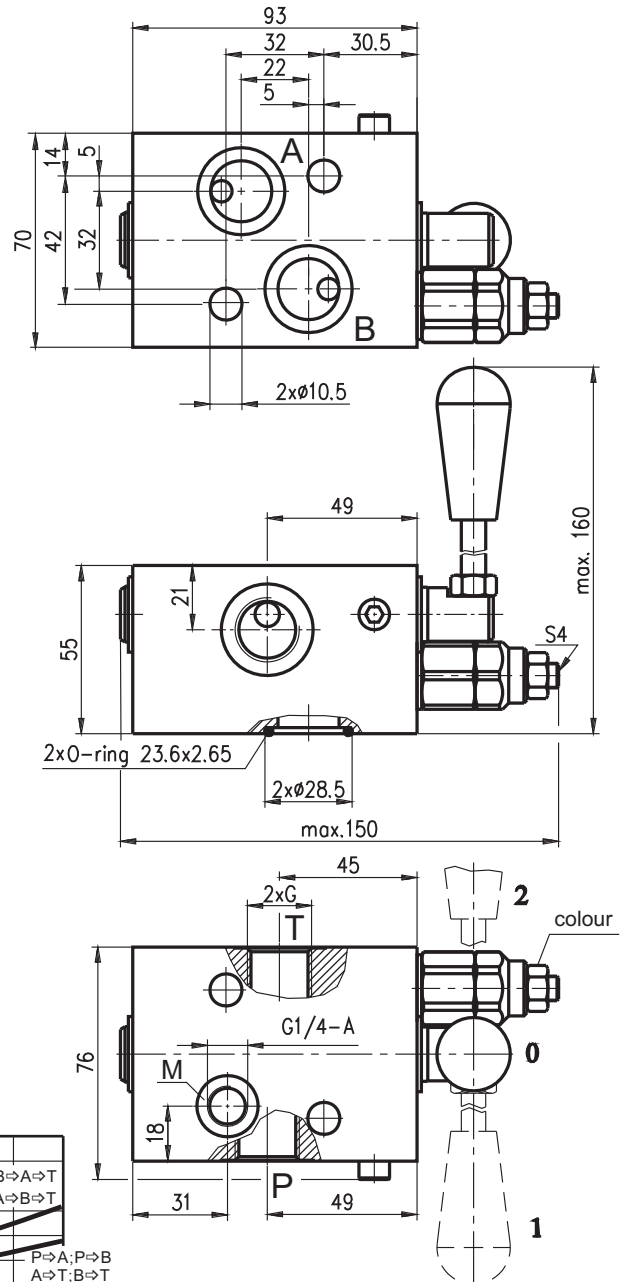
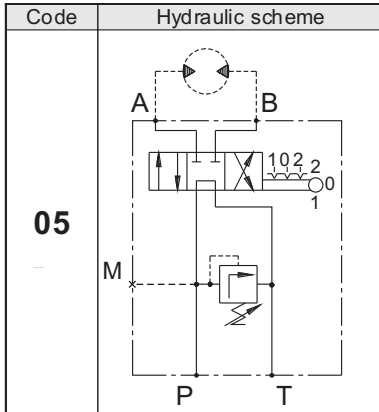
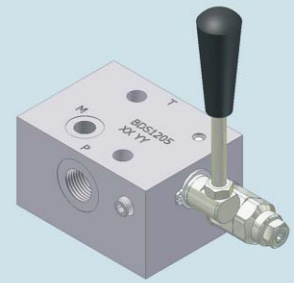


**Hidro  
Pnevmo  
Tehnika**

3, Vojeli St., Kazanlak, Bulgaria  
Tel.: +359 431/62 228  
Fax.: +359 431/62 019  
e-mail: [info@hpt-bg.com](mailto:info@hpt-bg.com)  
[www.hpt-bg.com](http://www.hpt-bg.com)

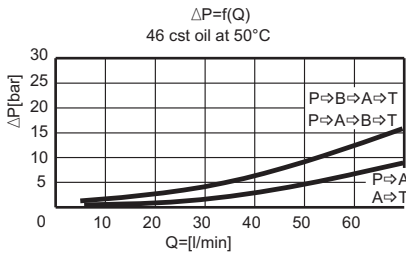
## HYDRAULIC MOTOR BLOCKS TYPE BD

**BDS 1205 ./... .**



| Pressure range |                             |                     |        |
|----------------|-----------------------------|---------------------|--------|
| Code           | Standard setting (Q=5l/min) | Abj. pressure range | Colour |
|                | bar                         | bar                 | -      |
| <b>10</b>      | 80                          | 10...100            | White  |
| <b>25</b>      | 180                         | 30...250            | Yellow |

| Code     | Adjustments                 |
|----------|-----------------------------|
| <b>A</b> | Leakproof hex. socket screw |
| <b>B</b> | Handknob and locknut        |
| <b>C</b> | Sealing cap                 |



| Type                    | Nom. flow rate | P <sub>max.</sub> | Port threads G  |
|-------------------------|----------------|-------------------|-----------------|
|                         | L/min          | bar               | -               |
| <b>BDS 38... /... .</b> | 25             | 250               | G3/8 - DIN 3852 |
| <b>BDS 12... /... .</b> | 60             | 250               | G1/2 - DIN 3852 |

**ORDERING CODE**

**BD S 12 05 L / 10 A**

|      |  |  |  |
|------|--|--|--|
| Type | Hydraulic motor type - code:<br>MS                             | Code scheme:<br><b>04; 05</b>  | Code adjustments:<br><b>A; B; C</b><br>(see table above) |
|      | Port threads G - code:<br>G3/8 - <b>38</b><br>G1/2 - <b>12</b> | Body material - code:<br>Aluminium - <b>Omit</b><br>Brass - <b>L</b> | Pressure range code:<br><b>10; 25</b>                    |