

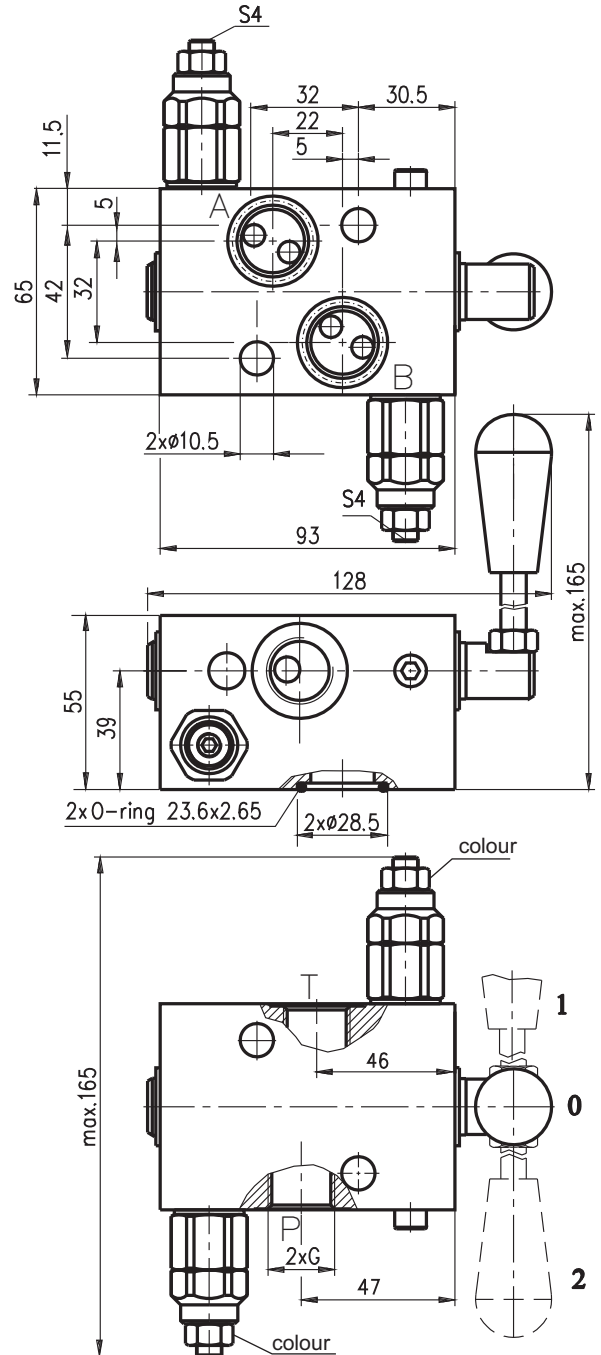
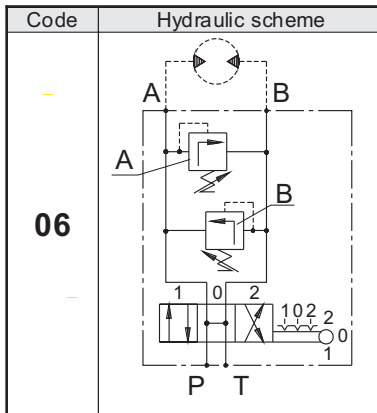
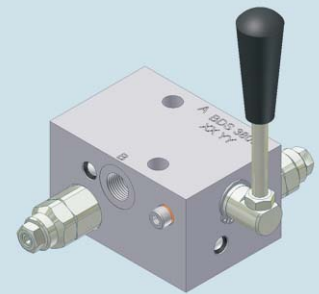


**Hidro  
Pnevmo  
Tehnika**

3, Vojeli St., Kazanlak, Bulgaria  
Tel.: +359 431/62 228  
Fax.: +359 431/62 019  
e-mail: [info@hpt-bg.com](mailto:info@hpt-bg.com)  
[www.hpt-bg.com](http://www.hpt-bg.com)

## HYDRAULIC MOTOR BLOCKS TYPE BD

**BDS 3806/... - ...**



Code	Adjustments
A	Leakproof hex. socket screw
C	Sealing cap

Type	Nom. flow rate	P <sub>max.</sub>	Port threads G
	L/min	bar	-
BDS 3806 /... - ...	25	250	G38 - DIN 3852

Pressure range			
Code	Standard setting (Q=5l/min) bar	Abj. pressure range bar	Colour
10	80	10...100	White
25	180	30...250	Yellow

### ORDERING CODE

**BD S 38 06 / A10 A - B25 A**

Type

Hydraulic motor type - code:  
MS - S

Port threads G - code:  
G3/8 - 38

Code scheme:  
06

Code adjustments:  
**A; C**  
(see table above)

Pressure range  
valve "A"-code:  
**10; 25**

Code adjustments:  
**A; C**  
(see table above)

Pressure range  
valve "B"-code:  
**10; 25**