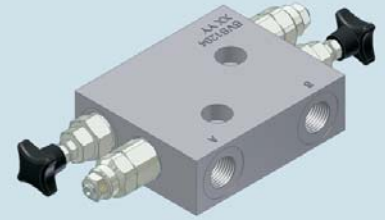




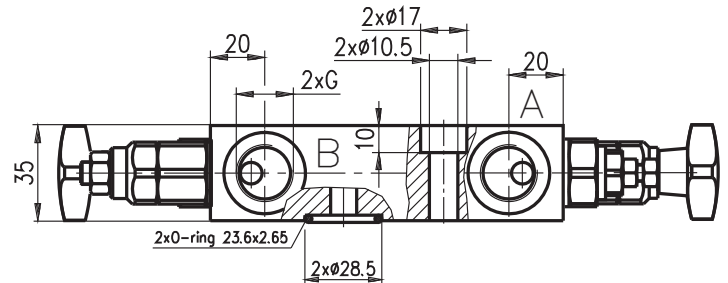
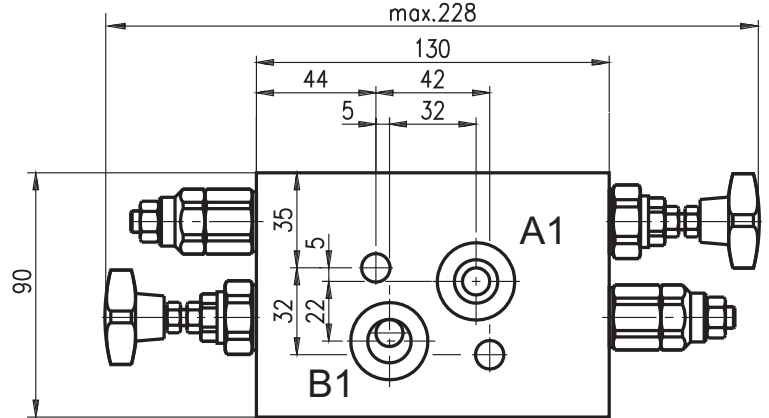
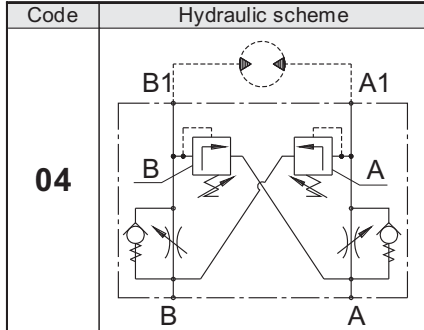
**Hidro
Pnevmo
Tehnika**

3, Vojeli St., Kazanlak, Bulgaria
Tel.: +359 431/62 228
Fax.: +359 431/62 019
e-mail: info@hpt-bg.com
www.hpt-bg.com

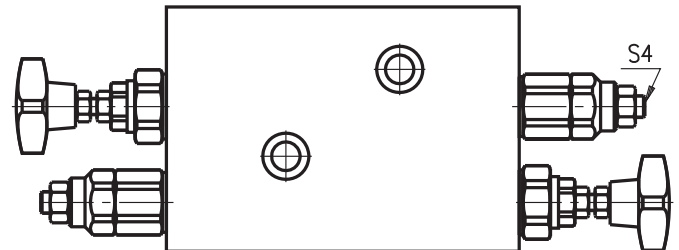
HYDRAULIC MOTOR BLOCKS TYPE BV



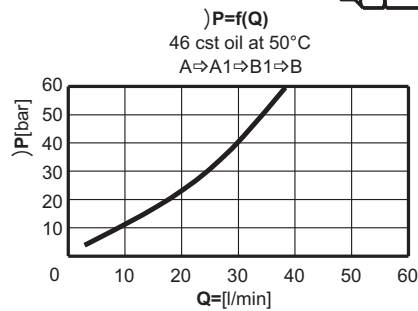
BVS .. 04/..



Pressure range			
Code	Standard setting (Q=5l/min)	Adj. pressure range	Colour
	bar	bar	-
10	80	10...100	White
25	180	30...250	Yellow



Code	Adjustments
A	Leakproof hex. socket screw
B	Handknob and locknut
C	Sealing cap



Type	Nom. flow rate	P _{max.}	Port threads G
	L/min	bar	-
BVS 1204 /... -...	50	250	G1/2 - DIN 3852

ORDERING CODE

BV S 12 04 / A10 A - B25 A

Type

Hydraulic motor type - code:
MS

Port threads G - code:
G1/2 - 12

Code scheme:
04

Code adjustments:
A; B; C
(see table above)

Pressure range code
valve "A":
10; 25

Code adjustments:
A; B; C
(see table above)

Pressure range code
valve "B":
10; 25