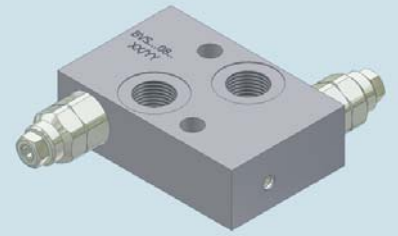




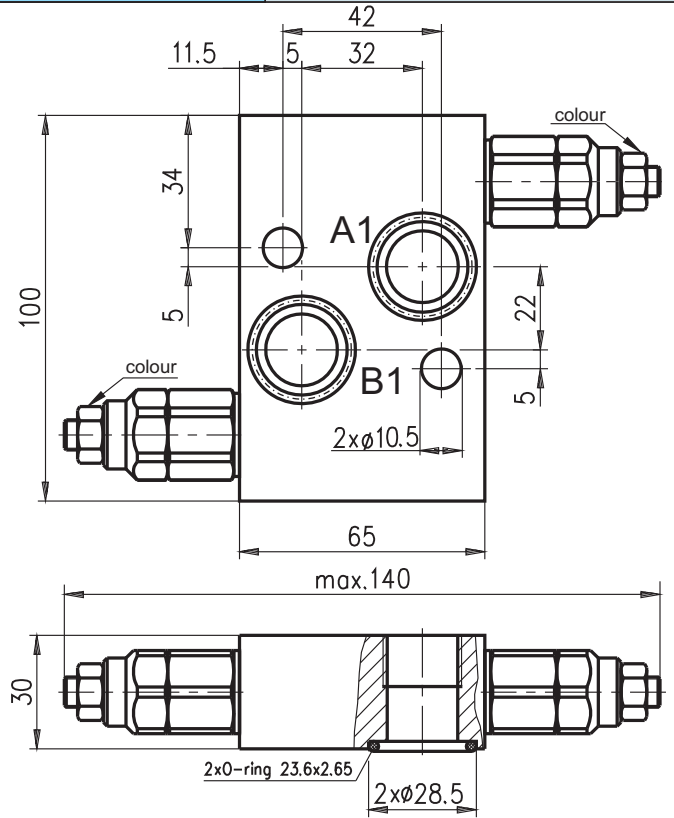
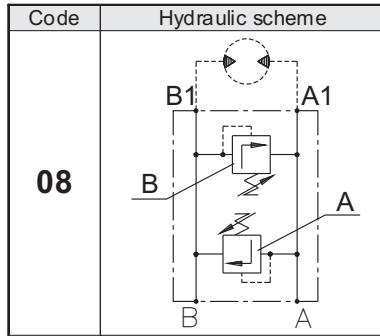
**Hidro
Pnevmo
Tehnika**

3, Vojeli St., Kazanlak, Bulgaria
Tel.: +359 431/62 228
Fax.: +359 431/62 019
e-mail: info@hpt-bg.com
www.hpt-bg.com

HYDRAULIC MOTOR BLOCKS TYPE BV

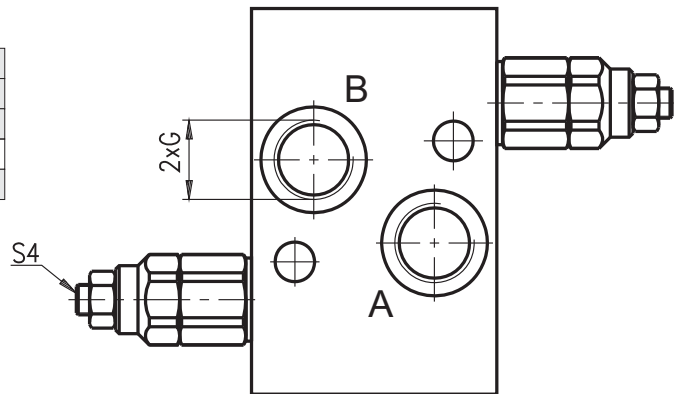


BVS 12 08../... ..



Pressure range			
Code	Standard setting (Q=5l/min)	Adj. pressure range	Colour
	bar	bar	
10	80	10...100	White
25	180	30...250	Yellow

Code	Adjustments
A	Leakproof hex. socket screw
B	Handknob and locknut
C	Sealing cap



Type	Nom. flow rate	P _{max.}	Port threads G
	L/min	bar	-
BVS 1208 /... ..	50	250	G1/2 - DIN 3852
BVS 2208 /... ..	50	250	M22x1,5 - DIN 3852

ORDERING CODE

BV S 12 08 AL / A10 A - B25 A

Type	Hydraulic motor type - code: MS	Code adjustments: A; B; C (see table above)	Code adjustments: A; B; C (see table above)
Port threads G - code G1/2 - 12 M22x1,5 - 22	Code scheme: 08	Body material - code: Cast iron - Omit Aluminium - AL	Pressure range code valve "A": 10; 25
			Pressure range code valve "B": 10; 25