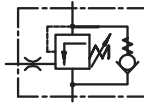

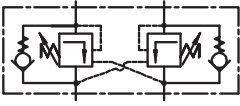

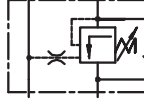

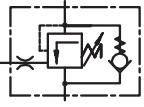
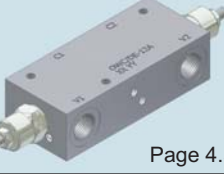
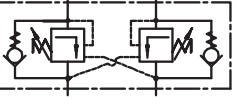
 <p>Page 4.1</p>	<b>OWC/SE-1/1</b> 
 <p>Page 4.2</p>	<b>OWC/DE-1/1</b> 
 <p>Page 4.3</p>	<b>OWC/SE-38/1.M</b> 

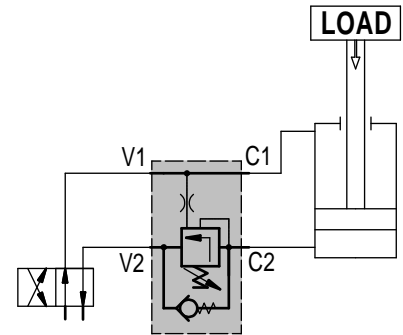
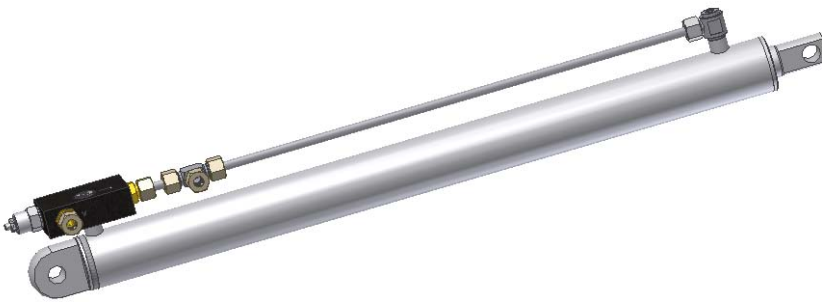
 <p>Page 4.4</p>	<b>OWC/SE-34/1</b> 
 <p>Page 4.5</p>	<b>OWC/DE-34/1</b> 



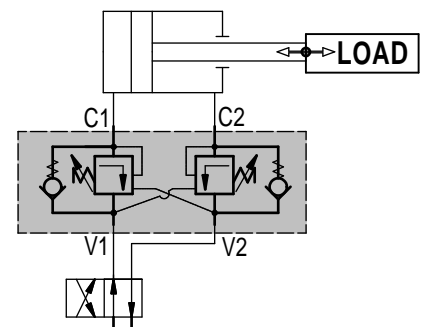
The basic purpose of overcenter valves is to convert negative loads into positive loads so that directional control valves always see a positive load. This greatly simplifies precise motion control.

Examples of connections are given below:

### 1. Of single valve



### 2. Of double valve





**Hidro  
Pnevmotehnika**

3, Vojeli St., Kazanlak, Bulgaria  
Tel.: +359 431/62 228  
Fax.: +359 431/62 019  
e-mail : info@hpt-bg.com  
www.hpt-bg.com

## IN-LINE SINGLE OVERCENTER VALVE

**OWC/SE-../..**

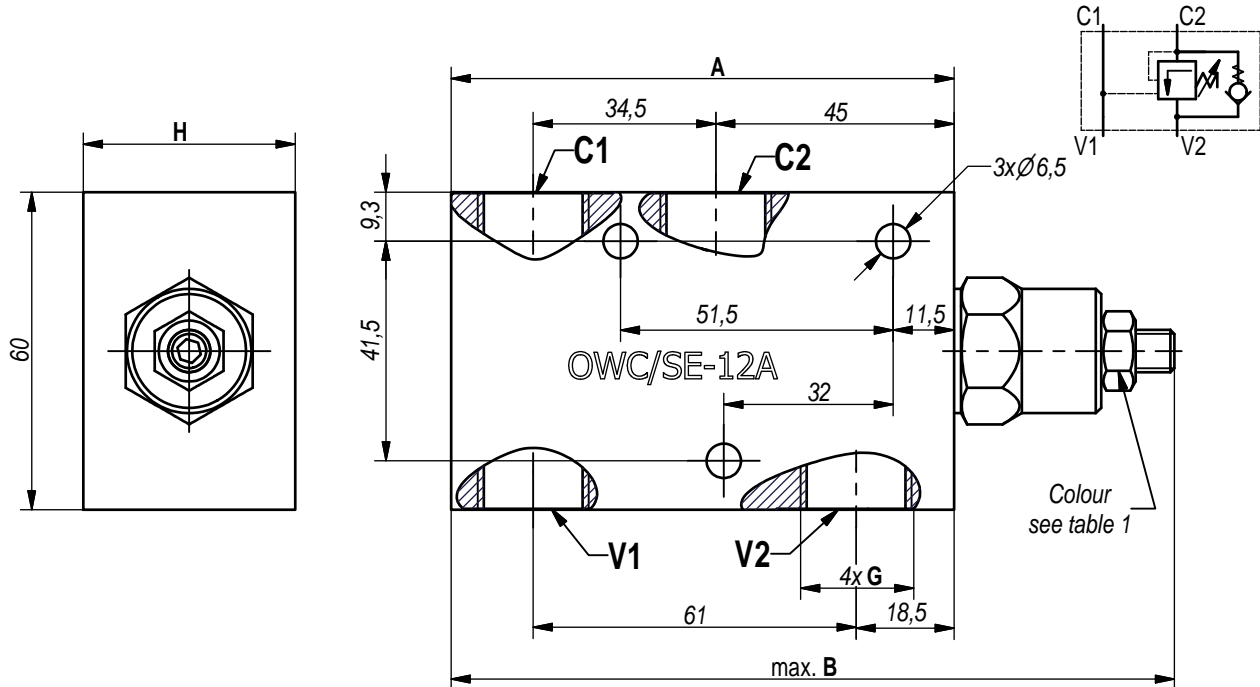
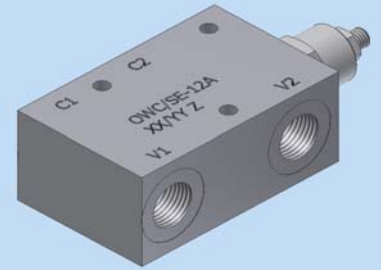


Table 1

Code	Pressure range		Pilot ratio	Colour
	Standard setting bar (Q=5L/min)	Adj. pressure range bar		
25	100	60..250	4,26:1	White
35	250	100..350	4,26:1	Yellow

Table 2

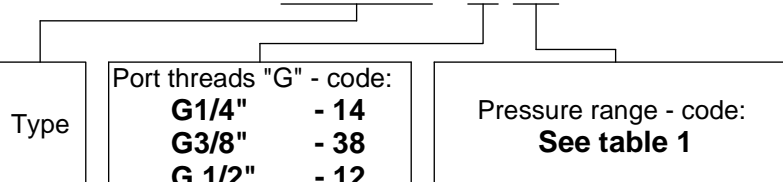
Type	Q nom.	A	B	G	H	Body material
	L/min.	mm	mm	-	mm	
OWC/SE-14/25A	30	90	135	G 1/4"-DIN 3852	30	Aluminum
OWC/SE-38/25A	35	90	135	G 3/8"-DIN 3852	30	Aluminum
OWC/SE-12/25A	50	95	140	G 1/2"-DIN 3852	40	Aluminum
OWC/SE-14/35A	30	90	135	G 1/4"-DIN 3852	30	Steel
OWC/SE-38/35A	35	90	135	G 3/8"-DIN 3852	30	Steel
OWC/SE-12/35A	50	95	140	G 1/2"-DIN 3852	30	Steel

All performances and calibration are carried out by using hydraulic oil with viscosity approx. 46 cSt at 50°C.

Working fluid - mineral oil with:  
- viscosity - 10...100 cSt;  
- temperature - -20...+80°C;  
- filtration level - 25 µm.

### ORDERING CODE

**OWC/SE - 38/25**





**Hidro  
Pnevmotehnika**

3, Vojeli St., Kazanlak, Bulgaria  
Tel.: +359 431/62 228  
Fax.: +359 431/62 019  
e-mail : info@hpt-bg.com  
www.hpt-bg.com

## IN-LINE DUAL OVERCENTER VALVE

**OWC/DE-../..**

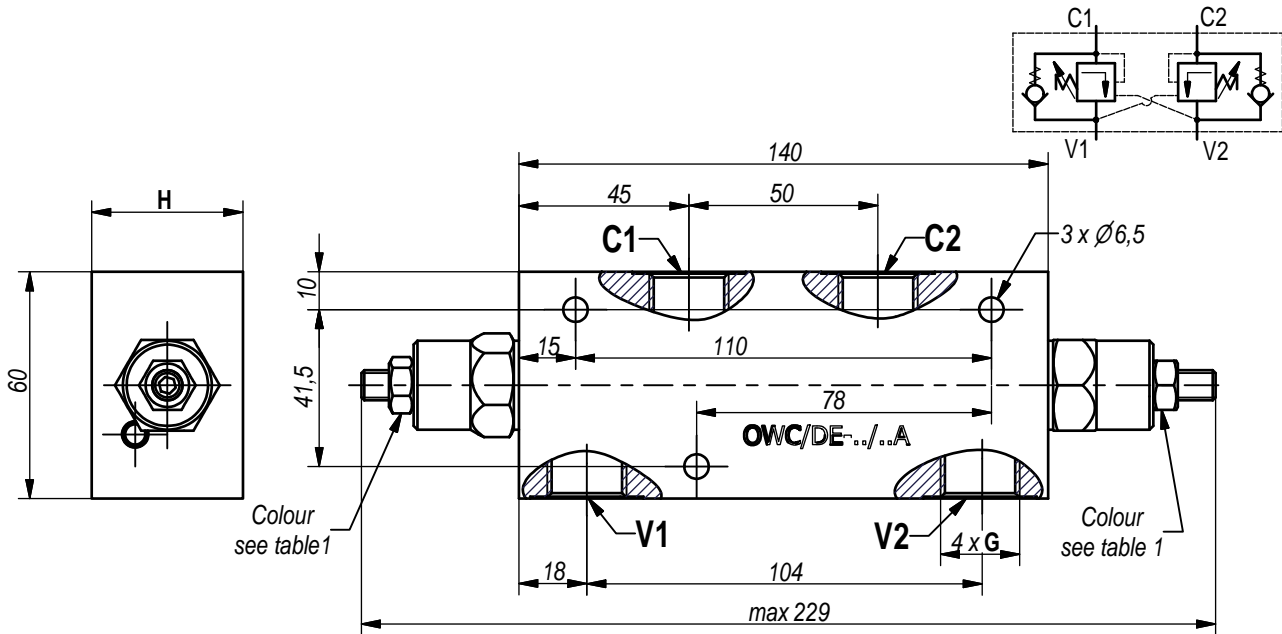
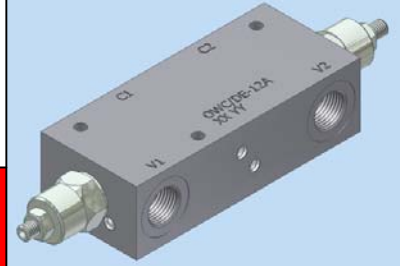


Table 1

Pressure range				
Code	Standard setting bar (Q=5L/min)	Adj. pressure range bar	Pilot ratio	Colour
25	100	60...250	4,26:1	White
35	250	100...350	4,26:1	Yellow

Table 2

Type	Q nom.	G	H	Body material
	L/min.			
OWC/DE-1 4/25 A	30	G 1/4"-DIN 3852	30	Aluminum
OWC/DE-3 8/25 A	35	G 3/8"-DIN 3852	30	Aluminum
OWC/DE-1 2/25 A	50	G 1/2"-DIN 3852	40	Aluminum
OWC/DE-1 4/35 A	30	G 1/4"-DIN 3852	30	Steel
OWC/DE-3 8/35 A	35	G 3/8"-DIN 3852	30	Steel
OWC/DE-1 2/35 A	50	G 1/2"-DIN 3852	30	Steel

All performances and calibration are carried out by using hydraulic oil with viscosity approx. 46 cSt at 50°C.

**Working fluid** - mineral oil with:  
- viscosity - 10...100 cSt;  
- temperature - -20...+80°C;  
- filtration level - 25 µm.

### ORDERING CODE

**OWC/DE - 38/25**

Type

Port threads "G" - code:  
**G1/4" - 14**  
**G3/8" - 38**  
**G1/2" - 12**

Pressure range - code:  
**See table 1**



**Hidro  
Pnevmo  
Tehnika**

3, Vojeli St., Kazanlak, Bulgaria  
Tel.: +359 431/62 228  
Fax.: +359 431/62 019  
e-mail : info@hpt-bg.com  
www.hpt-bg.com

## SINGLE OVERCENTER VALVE WITH EXTERNAL PILOT- NIPPLE SCREW FLANGEABLE

**OWC/SE-38/..M**

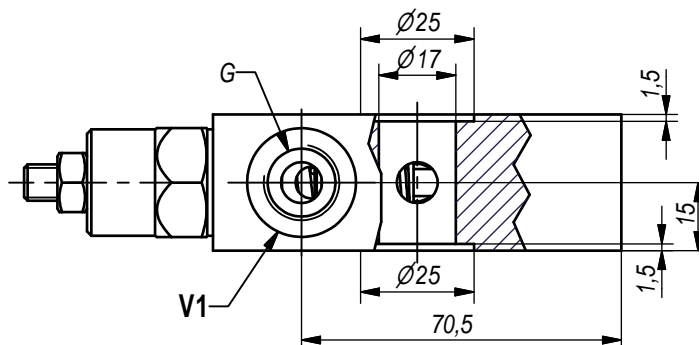
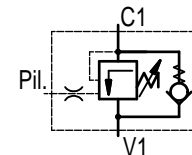
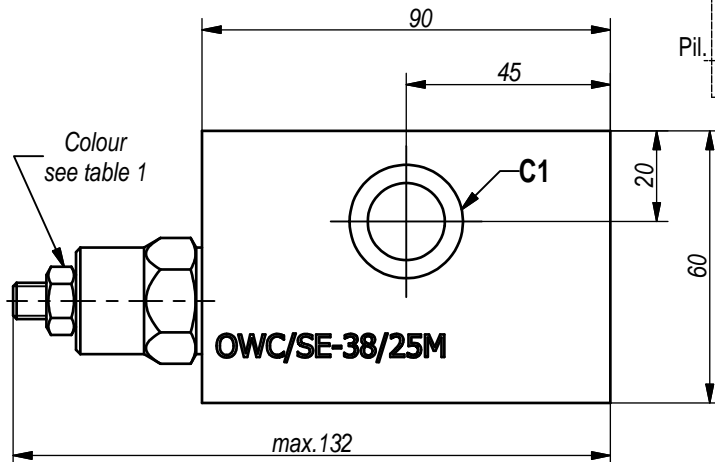
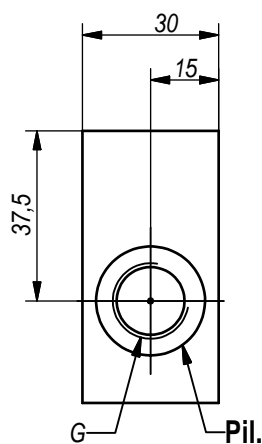


Table 1

Pressure range				
Code	Standard setting bar (Q=5L/min)	Adj. pressure range bar	Pilot ratio	Colour
25	100	60...250	4,26:1	White
35	250	100...350	4,26:1	Yellow

Table 2

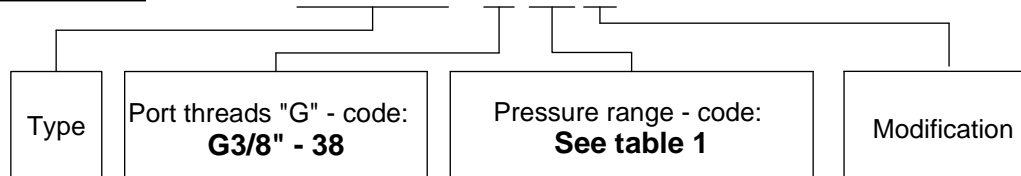
Type	Q nom.	G	Body material
	L/min.		
OWC/SE-38/25M	35	G3/8"-DIN 3852	Aluminium
OWC/SE-38/35M	35	G3/8"-DIN 3852	Cast iron

All performances and calibration are carried out by using hydraulic oil with viscosity approx. 46 cSt at 50°C.

**Working fluid** - mineral oil with:  
 - viscosity - 10...100 cSt;  
 - temperature - -20...+80°C;  
 - filtration level - 25 µm.

### ORDERING CODE

### OWC/SE - 38/25 M





**Hidro  
Pnevmotehnika**

3, Vojeli St., Kazanlak, Bulgaria  
Tel.: +359 431/62 228  
Fax.: +359 431/62 019  
e-mail : info@hpt-bg.com  
www.hpt-bg.com

## IN-LINE SINGLE OVERCENTER VALVE

**OWC/SE- 34/.. .**

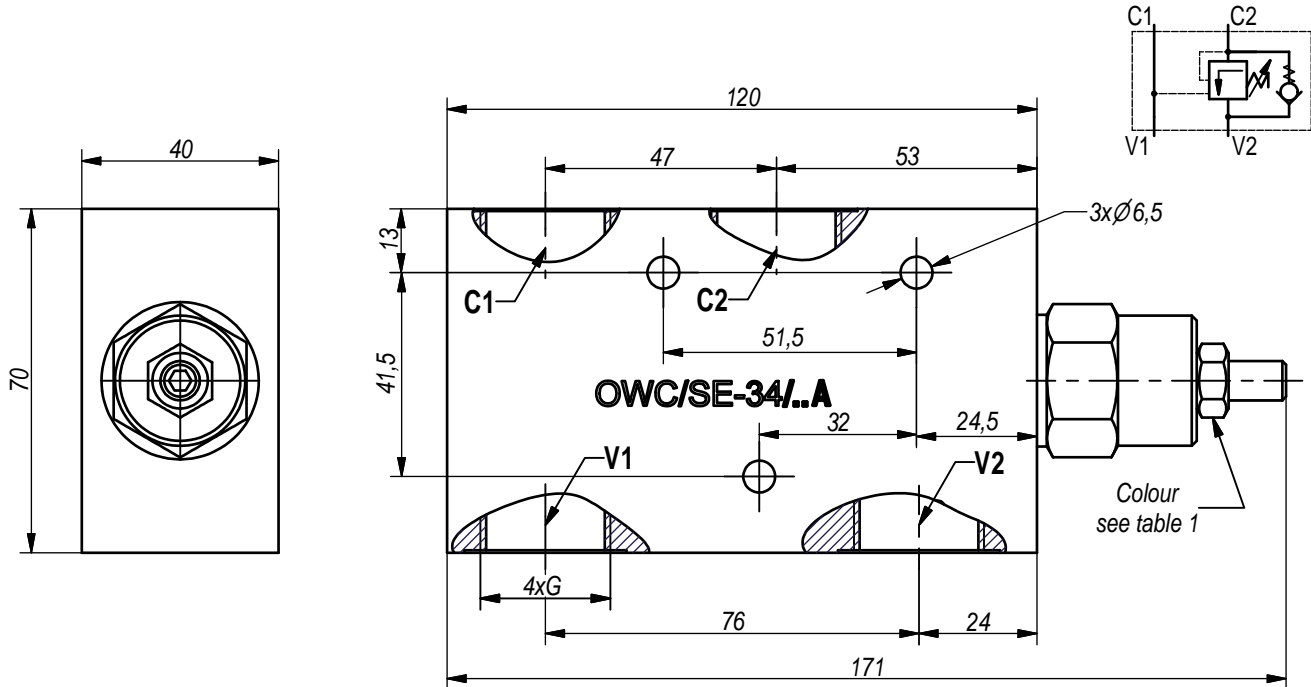
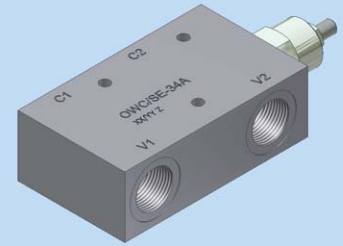


Table 1

Pressure range				
Code	Standard setting bar (Q=5L/min)	Adj. pressure range bar	Pilot ratio	Colour
25	100	60...250	4,26:1	White
35	250	100...350	4,26:1	Yellow

Table 2

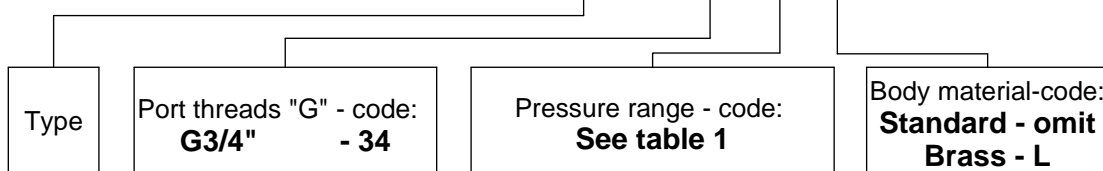
Type	Q <sub>nom.</sub>	G	Body material
	L/min.	-	-
OWC/SE-34/25A	100	G3/4"-DIN 3852	Aluminum
OWC/SE-34/25LA	100	G3/4"-DIN 3852	Brass
OWC/SE-34/35A	100	G3/4"-DIN 3852	Cast iron

All performances and calibration are carried out by using hydraulic oil with viscosity approx. 46 cSt at 50°C.

**Working fluid** - mineral oil with:  
- viscosity - 10...100 cSt;  
- temperature - -20...+80°C;  
- filtration level - 25 µm.

### ORDERING CODE

**OWC/SE - 34 / 25 L**





**Hidro  
Pnevmotekhnika**

3, Vojeli St., Kazanlak, Bulgaria  
Tel.: +359 431/62 228  
Fax.: +359 431/62 019  
e-mail : info@hpt-bg.com  
www.hpt-bg.com

## IN-LINE DUAL OVERCENTER VALVE

**OWC/DE- 34/..**

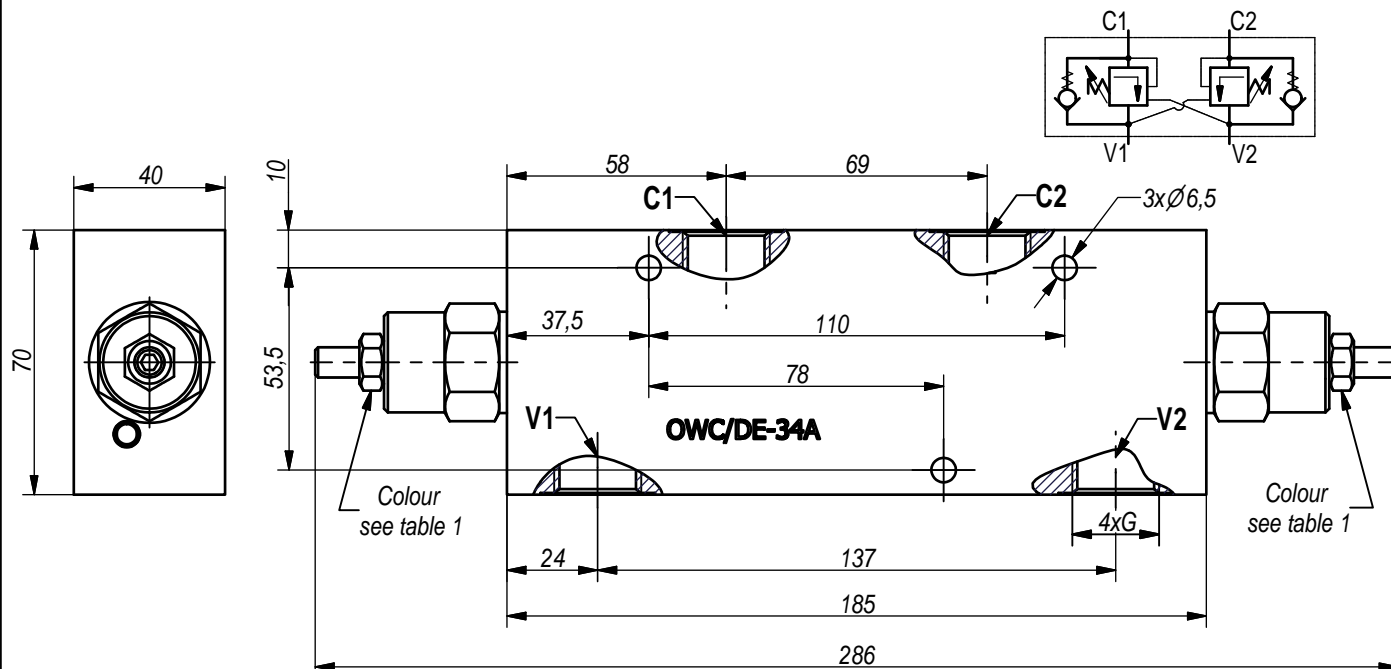


Table 1

Pressure range				
Code	Standard setting bar (Q=5L/min)	Adj. pressure range bar	Pilot ratio	Colour
25	100	60...250	4,26:1	White
35	250	100...350	4,26:1	Yellow

Table 2

Type	Q <sub>nom.</sub>	G	Body material
	L/min.	-	-
OWC/DE-34/25A	100	G3/4"-DIN 3852	Aluminum
OWC/DE-34/35A	100	G3/4"-DIN 3852	Cast iron

All performances and calibration are carried out by using hydraulic oil with viscosity approx. 46 cSt at 50°C.

**Working fluid** - mineral oil with:  
- viscosity - 10...100 cSt;  
- temperature - -20...+80°C;  
- filtration level - 25 μm.

### ORDERING CODE

**OWC/DE - 34/25**

