

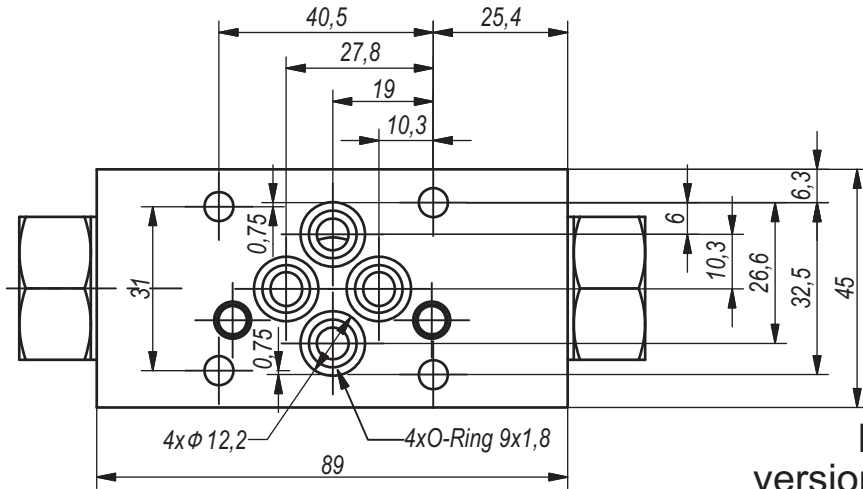
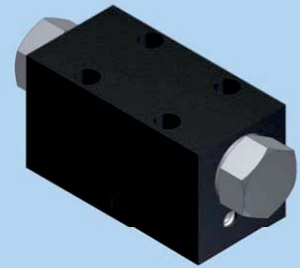


**Hidro  
Pnevmo  
Tehnika**

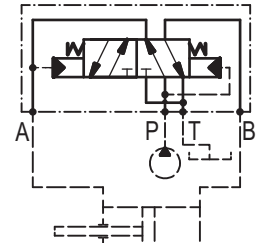
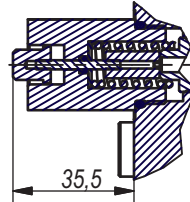
3, Vojeli St., Kazanlak, Bulgaria  
Tel.: +359 431/ 62 228  
e-mail : info@hpt-bg.com  
www.hpt-bg.com

## HYDRAULIC DIRECTIONAL CONTROL VALVES WITH AUTOMATIC SWITCHING

**4/2 RHA06/20.**

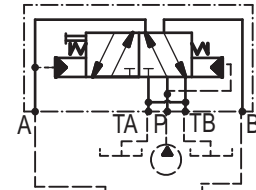


**B  
version "AM"**

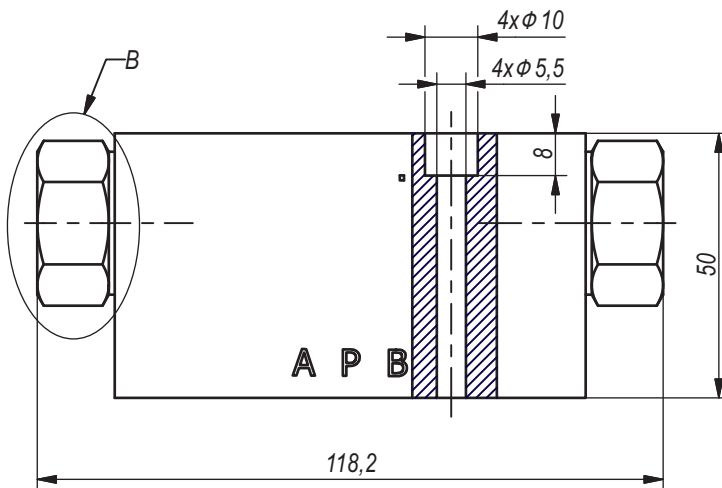


scheme 1

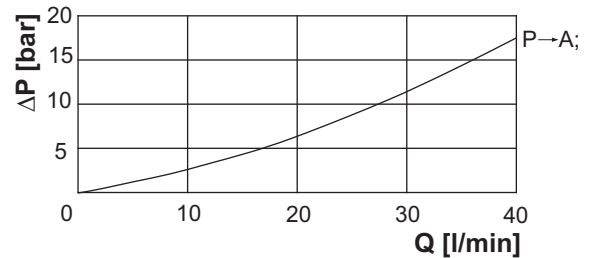
version "AM"



scheme 2



$$\Delta P = f(Q)$$



**Note:**

- All performances and calibration are carried out by using hydraulic oil with viscosity approx 46 cSt at 50 °C.
- Mounting plate:  
- acc. to ISO 4401-AB-03-4A (CETOP3)
- Tightening torque of the connecting screws on the mounting plate - 8,5 N.m.

TECHNICAL DATA		
General		
Ambient temperature	°C	-20...+50
Hydraulic		
Working pressure	bar	20...200
Flow rate	L/min	3...30
Working fluid - mineral oil		
- viscosity	mm <sup>2</sup> /s	10...100
- filtration level	mm	25 or better
- temperature	°C	-20...+80

**ORDERING CODE**

**4/2 RHA06 / 20 A**

