

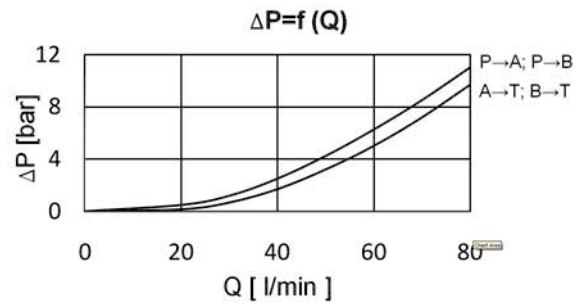
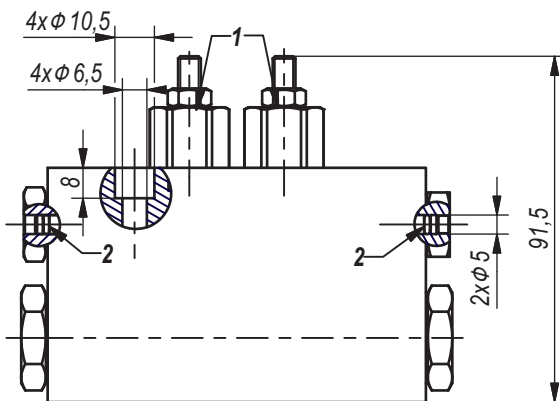
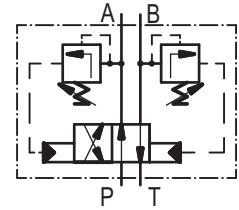
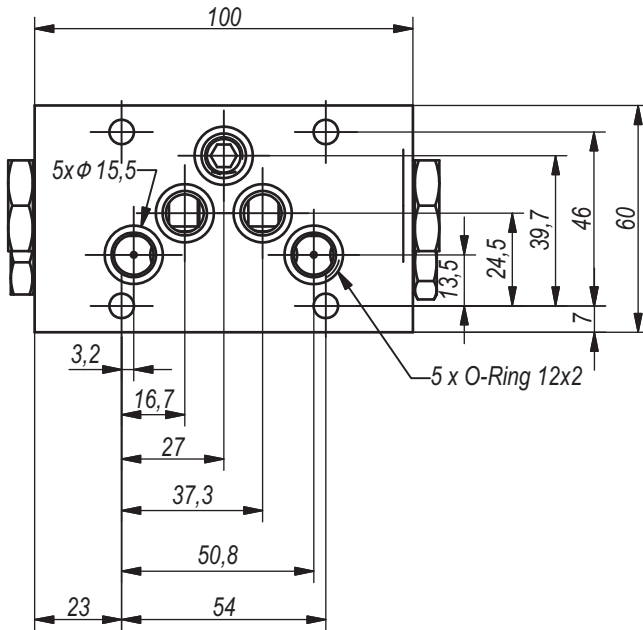
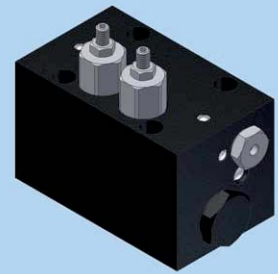


**Hidro
Pnevmo
Tehnika**

3, Vojeli St., Kazanlak, Bulgaria
Tel.: +359 431/ 62 228, 68 440
e-mail: info@hpt-bg.com
www.hpt-bg.com

HYDRAULIC DIRECTIONAL CONTROL VALVES WITH AUTOMATIC SWITCHING

4/2 RHA10/20



Note:

- All performances and calibration are carried out by using hydraulic oil with viscosity approx 46 cSt at 50 °C.
- Initial switching of the directional control valve
 - by push pins (position 2).
- Mounting plate:
 - acc. to ISO 4401-AB-05-4A (CETOP5)
- Tightening torque of the connecting screws on the mounting plate - 14 N.m.

TECHNICAL DATA		
General		
Ambient temperature	°C	-20...+50
Hydraulic		
Working pressure P_w	bar	50...200
Pressure adjustment of relief valves (position 1)	bar	$P_w + 10\%P_w$
Flow rate	L/min	5...80
Working fluid - mineral oil		
- viscosity	mm ² /s	10...100
- filtration level	mm	25 or better
- temperature	°C	-20...+80

ORDERING CODE

4/2 RHA10 / 20

