

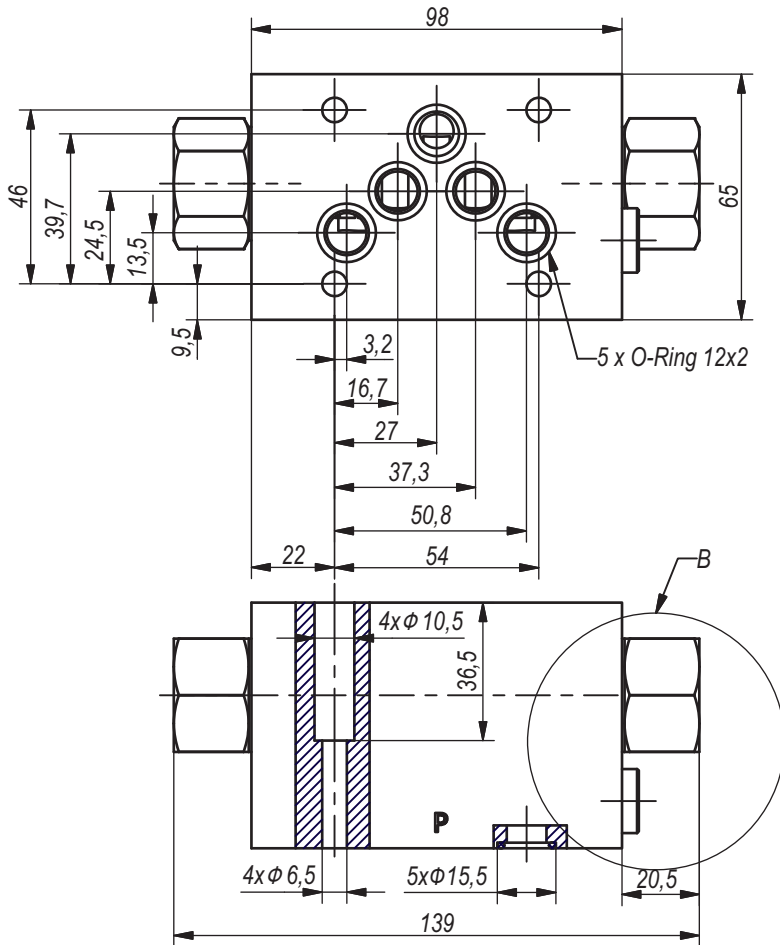
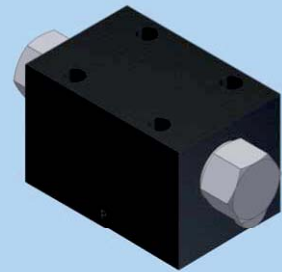


**Hidro
Pnevmo
Tehnika**

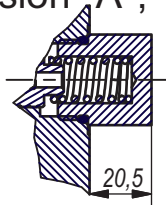
3, Vojeli St., Kazanlak, Bulgaria
Tel.: +359 431/ 62 228, 68 440
e-mail: info@hpt-bg.com
www.hpt-bg.com

HYDRAULIC DIRECTIONAL CONTROL VALVES WITH AUTOMATIC SWITCHING

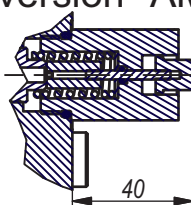
4/2 RHA10/20..



B
version "A"; "AT"

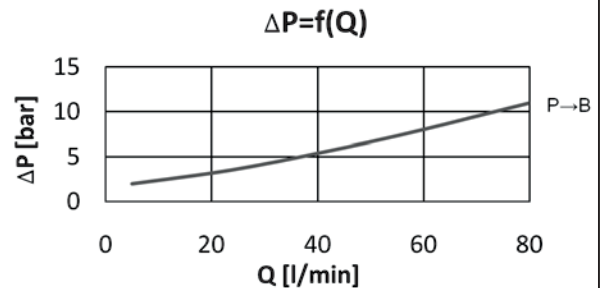
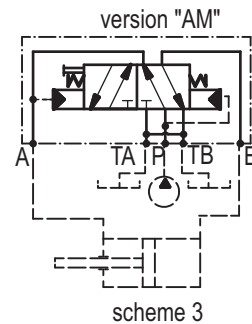
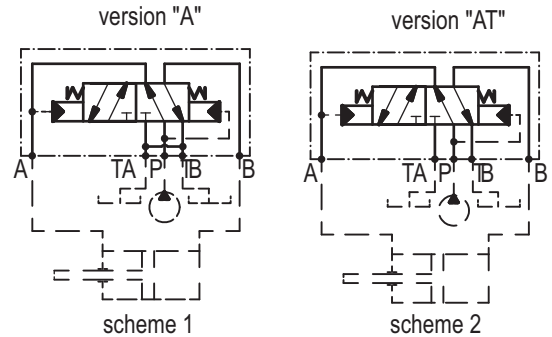


B
version "AM"



Note:

- All performances and calibration are carried out by using hydraulic oil with viscosity approx 46 cSt at 50 °C.
- Mounting plate:
- acc. to ISO 4401-AB-05-4A (CETOP5)
- Tightening torque of the connecting screws on the mounting plate - 14 N.m.



TECHNICAL DATA		
General		
Ambient temperature	°C	-20...+50
Hydraulic		
Working pressure	bar	20...200
Flow rate	L/min	3...80
Working fluid - mineral oil		
- viscosity	mm ² /s	10...100
- filtration level	mm	25 or better
- temperature	°C	-20...+80

ORDERING CODE

4/2 RHA10 / 20 A

