

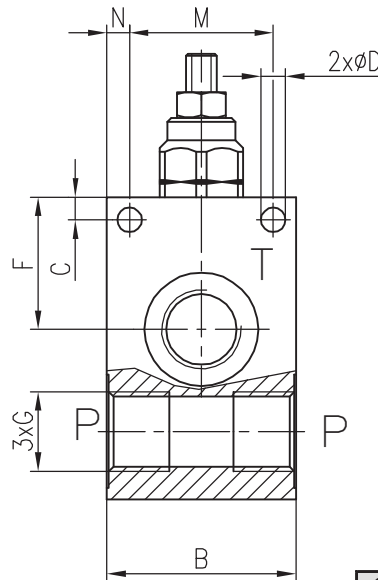
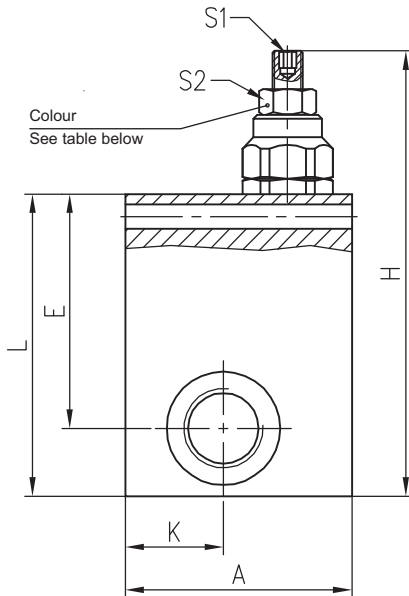
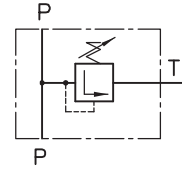


**Hidro
Pnevmo
Tehnika**

3, Vojeli St., Kazanlak, Bulgaria
Tel.: +359 431/ 62 228, 68 440
e-mail: info@hpt-bg.com
www.hpt-bg.com

RELIEF VALVE

CPL .../.../...



| Code | Pressure range | | Colour |
|------|----------------------------|--|--------|
| | Adj. pressure range bar | Standard setting (Q=5 L/min) bar | |
| 10 | 10...100 | 80 | White |
| 25 | 30...250 | 180 | Yellow |
| 35 | 70...350 | 250 | Black |

| Code | Adjustment |
|------|-----------------------------|
| A | Leakproof hex. socket screw |
| B | Handknob and locknut |
| C | Sealing cap |

| Type | Q _{max} L/min | G | A | B | C | H | K | L | M | N | E | F | D | S1 | S2 |
|-----------|---------------------------|-------|----|----|----|-----|----|----|----|----|----|----|-----|----|----|
| | | | mm | mm | mm | mm | mm | mm | mm | mm | mm | mm | mm | mm | mm |
| CPL 40/14 | 40 | G 1/4 | 50 | 40 | 8 | 108 | 20 | 65 | 32 | 4 | 47 | 26 | 5,5 | 4 | 13 |
| CPL 40/38 | | G 3/8 | | | | | | | | | | | | | |
| CPL 40/12 | | G 1/2 | | | | | | | | | | | | | |
| CPL 80/12 | 80 | G 1/2 | 60 | 50 | 6 | 135 | 26 | 80 | 38 | 6 | 62 | 35 | 6,5 | 5 | 17 |
| CPL 80/34 | | G 3/4 | | | | | | | | | 60 | 33 | | | |

Note: 1. All performances and calibrations are carried out by using hydraulic oil with viscosity approx. 46 cSt at 50°C
2. Tightening torque: 35 N.m.
3. Working fluid: Viscosity - 10...100 mm²/s. Temperature range: -20°C...+80°C. Filtration absolute: 25 µm.

ORDERING CODE

CPL 40 / 14 -10 A

